

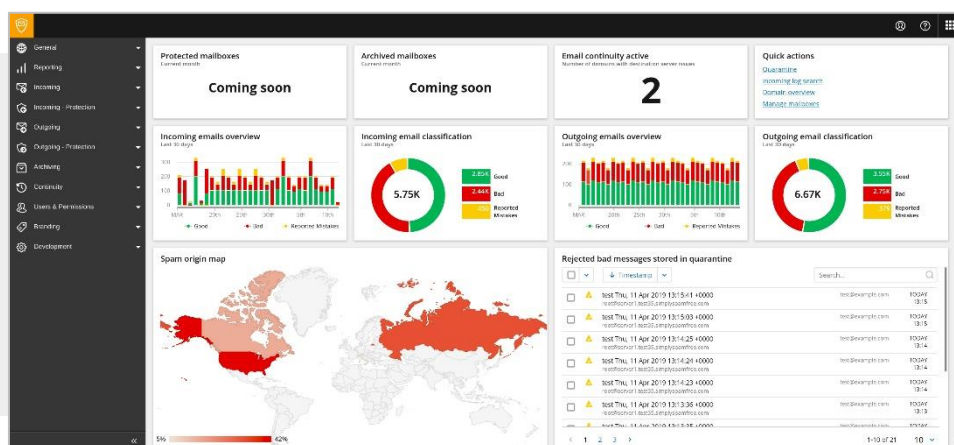


# SOTERIA

## Enterprise Mail Protection & Archiving Solution

Product Data Sheet – August 2020

# Atlantic Digital: Soteria

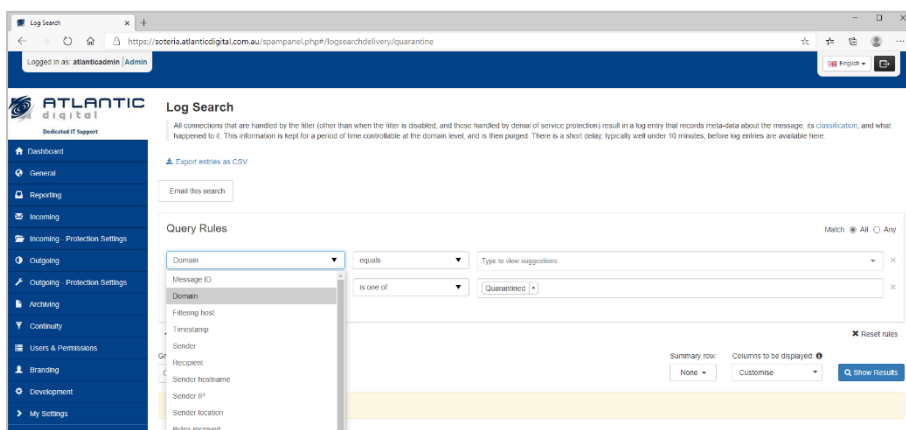


*Help keep your business safe and productive with email security built on collective intelligence*

Built on SolarWinds Mail Assure framework, Soteria is a cloud-based email security platform that helps your business stay in control and protect your inbound and outbound email using collective threat intelligence, 24/7 email continuity, and long-term email archiving.

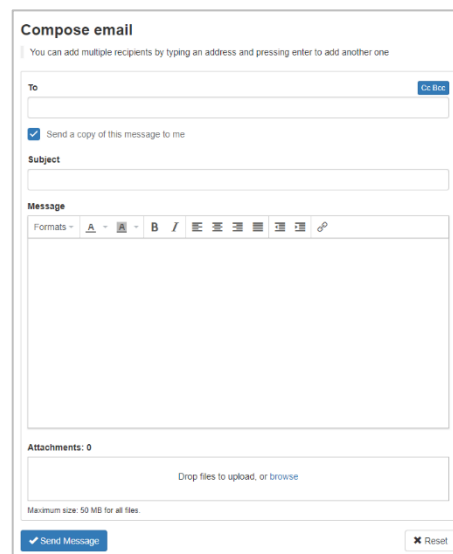
## ADVANCED THREAT PROTECTION FOR YOUR INBOUND AND OUTBOUND EMAIL

- ☒ Protection through collective intelligence incorporates data from over 23 million mailboxes to defend against email-borne threats.
- ☒ Real-time pattern threat recognition leverages a variety of filtering technologies to capture known, emerging, and targeted attacks.
- ☒ Near 100% filtering accuracy helps block email threats and gain end user trust.
- ☒ Abuse management reveals users and accounts sending out spam to help prevent IP blacklisting and damage to company reputation.



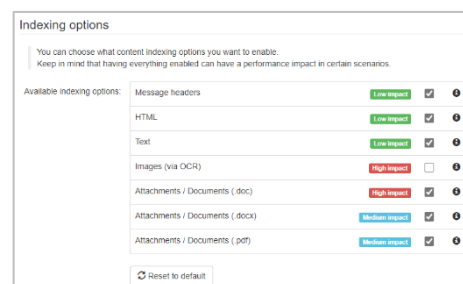
## MAINTAIN BUSINESS PRODUCTIVITY

- ☑ 24/7 built-in email continuity helps keep email available.
- ☑ Continuity capabilities allow users to continue to receive and send email during email server outages or downtime.
- ☑ Web-based networking tools help diagnose issues and increase visibility into server downtime and outages.
- ☑ Mobile device accessibility enables users to send and receive email, even if they don't have their computer.
- ☑ Continue to send email during server outages or downtime



## STORE EMAIL BEYOND YOUR PRIMARY EMAIL SERVICE'S RETENTION PERIOD WITH ENCRYPTED, LONG-TERM EMAIL ARCHIVING

- ☑ Long-term email archiving reduces chances of business data loss.
- ☑ Robust encryption in transit (using TLS encryption) and at rest (using AES encryption) helps keep data safe.
- ☑ Compressed storage for inbound and outbound emails keeps local infrastructure storage costs low—and boosts IT system performance.
- ☑ Journaling support allows users to easily retrieve emails from existing Microsoft® environments.




## Keep Users Safe and Productive

Businesses rely on secure email products to get their jobs done. They depend on you to safeguard their email. Soteria uses collective threat intelligence and machine learning to help protect email against spam, viruses, malware, ransomware, spear phishing, social engineering attacks, impersonation, spoofing, business email compromise, and other email-borne threats with 2B+ spam messages blocked per month.

# Features

## Cloud-Based Email Security

- Collective threat intelligence and machine learning helps protect email against spam, viruses, malware, ransomware, phishing, social engineering attacks, impersonation, spoofing, business email compromise, and other email-borne threats.
- Quarantine management gives users the power to view, release, blacklist, or whitelist messages.
- Attachment and macro blocking help protect against zero-day malware.
- Support for SPF, DKIM, and DMARC helps protect against spoofing and display name spoofing.

## 24/7 Built-In Email Continuity

- 14-day email queue support—even if the primary service is offline for two weeks, Soteria will continue attempting to deliver and store emails in the incoming delivery queue.
- Full fallback MX service helps ensure emails are delivered.
- Web-based access so users can continue to receive, send, and reply to email.
- Easy access to archived emails and the email quarantine.

## Integration with Microsoft 365

- A Microsoft 365 Sync wizard, with automatic synchronization options, simplifies onboarding of multiple Microsoft 365 users and improves efficiency.
- Seamless integration with an easy-to-install Microsoft 365 add-in allows users to report “spam” and “not spam” messages from Outlook® window, on the web, macOS® or Windows PC, iOS®, iPadOS®, or Android®, at no additional cost.
- Single sign-on (SSO) for Microsoft 365 Apps and Azure® Active Directory® to the Soteria interface allows users full transparency and control over their email flow.
- Built-in email continuity allows users to continue to receive, compose, and send email in the case of Microsoft 365 outages or downtime.

# 8 Reasons to use Soteria

Cybercriminals love email. It remains one of the most common attack vectors—and one of the easiest entry points—for cyberattacks. It's a tool used by a significant number of people to get an incredible amount of work done.

With Atlantic Digital's Soteria you can provide your business with powerful, affordable email protection and continuity designed to help keep users safe and keep their email up and running, while freeing your team from time-consuming spam and malware mitigation.

- 1. Advanced threat protection for all email**  
Soteria checks every incoming, outgoing, and internal email for malware, phishing, ransomware, viruses, spam, and other threats. The proprietary machine learning technology draws on insights from emails sent across the user base of over 23 million mailboxes, to continuously update our threat database. This helps deliver 99.999% filtering accuracy with close to zero false positives.
- 2. Email continuity**  
Soteria's core framework was designed to help provide email continuity and uninterrupted business productivity. Even if an email server goes down, users can still receive, read, and send email via a web interface supported by a network of highly available global data centres.
- 3. Email security made affordable**  
With Soteria, you pay per mailbox. You won't be locked into a long-term contract or forced to purchase a huge number of mailboxes upfront. Instead, you benefit from a simple, unified email security platform with predictable billing each month. And because Soteria is entirely cloud-based, there's no need to buy new hardware or install software in your network. Finally, Soteria's filtering technology includes 24/7 email continuity, anti-phishing and impersonation protection by default—no upcharge!
- 4. Total visibility and control over email flow**  
With a multitenant web interface, available in multiple languages, you get more control over email flow. You can set access and permission levels to allow your staff or managers to view all quarantined messages, then release, remove, blacklist, whitelist, or block those messages as needed.
- 5. Integration with other email services and infrastructure**  
Soteria works with any on-premises or cloud-based email service, adding an extra layer of protection to the default security features built into those platforms. Whether your business uses Microsoft 365™, Microsoft Exchange®, Google® G Suite® or other email tools, Soteria can help.
- 6. Seamless integration with Microsoft 365**  
Soteria includes an add-in, available from Microsoft AppSource®, to make integration with Microsoft 365 easier. The Microsoft 365 add-in enables users to mark messages as "spam" or "not spam" within their mail client of choice. In addition, a Microsoft 365 sync functionality simplifies onboarding of Microsoft 365 users from the multitenant dashboard, by safely connecting with Microsoft 365 credentials.
- 7. Data loss prevention with email archiving**  
Our built-in email archiving feature encrypts, compresses, and stores all legitimate incoming and outgoing messages in Soteria's cloud-based vault to help ensure a safe and searchable history of email communication and avoid the risk of losing messages. Robust encryption in transit (TLS) and at rest (AES) helps keep data secure.
- 8. Regional data storage support**  
Many businesses face strict rules regarding data processing and security, and therefore need to use data centres located in specific regions. Soteria offers a default global region, but also allows you to select storage options for your logs, quarantines, and archive data in the Australia, EU, UK, US and Canada.

# Soteria Summary

## Additional Features

- Customisable, multilingual interface for individual users allowing multi-levels of access inside your organisation.
- SSL/TLS traffic encryption enables Soteria email communication to be safely processed and transmitted.
- Customisable filtering rules help system users configure personalised views that apply to all domains linked to a specific user.
- Advanced log search functionality allows users to search and view their email traffic using a variety of query rules and criteria (i.e., quarantined, delivered, etc.) in the advanced log search.
- Whitelist and blacklist management means users have added control over their own email flow.
- Automated abuse report generation helps IT teams easily spot users and accounts sending out spam from networks, so they can be locked.

## Soteria Pricing (Ex-GST, Current as at August 2020)

Mail Protection	Mail Archiving
\$1.20 per mailbox per month	\$1.00 per mailbox per month
Scale up and down as required	No limit on storage or retention period
Individually select users if required	Historical users stored at no cost
All security features included	Easily import mail from other platforms

**Contact Atlantic Digital to get started!**

**Australia - 1300 699 077**

**New Zealand – 0800 699 077**

**<http://www.atlanticdigital.com.au>**